



Carmel Lounge



Stay at the Dan Panorama Jerusalem and you are in a prime location in the heart of the capital. It's a short stroll along historic landmarks to the ancient walls, holy sites and exotic markets of the Old City. Modern Jerusalem is on the doorstep and stores, business centers, theaters and museums are close by. Ideal for business guests, the hotel features conference and convention facilities and guestrooms with thought given to every amenity. With its dignified Jerusalem-stone exterior, welcoming ambiance, and excellent service, the Dan Panorama Jerusalem is a distinctive blend of attentive, caring hospitality with warm Israeli undertones.

Facilities & Services

- ☞ Cable TV
- ☞ Voice Mail system
- ☞ In-room Safe
- ☞ Mini Bar in rooms
- ☞ Hair Dryer in rooms
- ☞ Room Service
- ☞ Non Smoking Rooms
- ☞ Laundry & Dry Cleaning
- ☞ Synagogue
- ☞ "Carmel Floors" Lounge and Penthouse
- ☞ Business Center
- ☞ Concierge
- ☞ Taxi
- ☞ Car Rental
- ☞ Free Private Covered Parking
- ☞ Guided Tours
- ☞ Shuttle service to the Western Wall
(on Fridays upon request)

Sports

- ☞ Roof-top swimming pool and sun deck (summer)
- ☞ Newly equipped fitness room
- ☞ The Magic Touch Treatment Center*

All sports facilities are free of charge except when indicated by (*).

Shops

- ☞ Gifts and Newspapers
- ☞ Jewellery and Judaica
- ☞ Beauty Salon
- ☞ Photography Shop

Dan Panorama Jerusalem

Dan Panorama, Jerusalem

39 Keren Hayesod St.
Jerusalem 94188
Tel: 972-2-5695695
Fax: 972-2-6232411
e-mail: panoramajm@danhotels.com
Reservations: 972-3-5202552
reservations@danhotels.com

Accommodations

292 rooms including Suites, Family Rooms and Executive "Carmel Rooms"

GDS Access Codes:

Sabre-(UI) 16715, Galileo/Apollo-(UI) 16134,
Amadeus-(UI) JRSDAN, Worldspan-(UI) 60516

Represented by



Danyland Children's Club



Danyland and Cyberland Children's Clubs

Danyland - a magnificent club for the little ones where your children find attractive activities, handicrafts, films and dedicated staff to enable you and your children to enjoy a real holiday. 'Cyberland' for children, ages 8-13, offers independent activities, computer games and Sony Play-Stations.



The Penthouse overlooking the Old City



Dining Room

Dikla Dairy Restaurant

Offering a variety of non-meat meals, hot and cold drinks.

Lobby

Offering a light dairy menu and serving hot and cold drinks.

Bar and Espresso Bar

Offering wine, spirits and beer and lights snacks in a warm, intimate atmosphere.

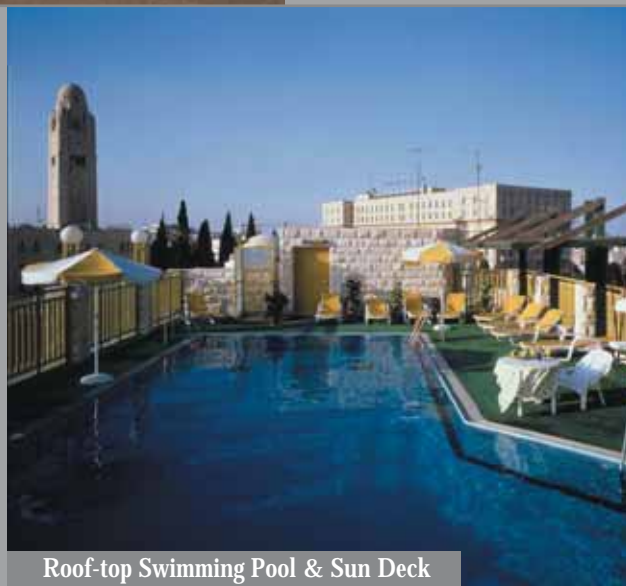
Conference & Banqueting

A choice of venues

The Dan Panorama Jerusalem is ideal for corporate events and family celebrations. The Hotel features a large choice of public rooms, reception halls and conference rooms of various sizes.

The Penthouse - a unique and elegant venue on the 11th floor with its terrace facing the magnificent view of the Old City - is one of a kind. It offers an exquisite atmosphere for intimate events.

Meeting, party and function space available for 10 to 400 persons.



Roof-top Swimming Pool & Sun Deck

Everything for the Business Traveller

Guest rooms with Cable T.V., Wireless Internet connection in rooms and public areas, (fax upon request), in-room safe, minibar, hair dryer, bathrobes. 24-Hour room service. Free Covered Parking, Express check-in/out. Complimentary daily newspaper. Concierge services.

Free use of Carmel V.I.P. Lounge for guests staying in Executive Rooms (aged 18 years and over), serving complimentary refreshments all day. Full range of business services. Free use of the King David Hotel's swimming pool and tennis court.

Free guided tour every Saturday to historic sites and attractions.

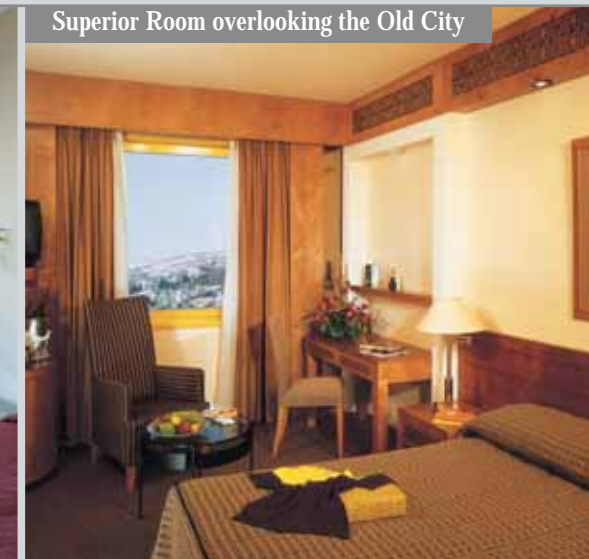
Dan Panorama Jerusalem Special Amenities & Services

- Wireless internet access - high speed (WI-FI) in rooms and public areas
- Business Lounge
- Fitness & Spa
- Children Activities

Spacious, warmly decorated Room



Superior Room overlooking the Old City





Dan Panorama Jerusalem

Dan Panorama, Jerusalem
 39 Keren Hayesod St. Jerusalem 94188
 Tel: 972-2-5695695
 Fax: 972-2-6250120
 E.mail: panoramajm@danhotels.com

GDS Access Codes:
 Sabre-(UI) 16715, Galileo/Apollo-(UI) 16134,
 Amadeus-(UI) JRSDAN, Worldspan-(UI) 60516

Guest Rooms & Suites

292 rooms including Suites, Family rooms and Executive Carmel Rooms.
 Max 3 persons in Standard and Superior rooms.
 Max 4 persons (2 adults and 2 children) in Family rooms.
 Max 2 persons in Executive rooms on Carmel Floors.

Standard (89)

Newly renovated, spacious, pleasantly decorated, overlooking either the New City or a typical Jerusalem neighborhood.
 Most rooms on floors 3-6. Some with connecting doors.

Superior (95)

Tastefully furnished, completely redecorated and refurbished, overlooking either the New City or a typical Jerusalem neighborhood. Most rooms on floors 2-6. All rooms with marble bathrooms.

Family (33)

Rooms large enough to conveniently accommodate up to 2 adults and 2 children, featuring a pull-out sofa and a sitting area. Most rooms with connecting doors.

Executive (66)

Tastefully furnished, completely redecorated and refurbished on the upper 4 floors (7, 8, 9, 10, 11), some with a view of the Old City. Featuring a non-smoking floor (3, 5, 6, 8, 9). All rooms with marble bathrooms, fully stocked mini-bar and coffee kit.
 Free entrance to Carmel V.I.P. Lounge (9th floor).

Suites (9)

Spacious tastefully furnished living room, bedroom and bathroom. Possibility to connect an additional bedroom to provide a 2-bedroom suite option.
 Some with terrace.
 Fully stocked mini-bar and coffee kit.
 Guests staying in Suite enjoy superior personalized service and free entrance to Carmel V.I.P. Lounge (9th floor).



Rates March 1, 2009 - February 28, 2010

All rates are in US\$, per person, per night including Israeli Breakfast & Service Charge.
 Tourists are exempt from V.A.T.

ROOM GRADE		A Nov. 29 - Dec, 19, '09 Jan. 3 - Feb. 28, '10		*B Mar. 1 - Apr. 6, '09 *Apr. 18 - Sept 30, '09 Oct. 12 - Nov. 28, '09 *Dec 20, '09 - Jan 2, '10		C Apr. 7-17, '09		D Oct. 1-11, '09	
		LOW		REGULAR		HIGH		PEAK	
		P.P. DBL	SGL	P.P. DBL	SGL	P.P. DBL	SGL	P.P. DBL	SGL
STANDARD	1 NT	107	194	126	232	160	300	170	320
	5 NTS	102	184	120	220	N.A.	N.A.	N.A.	N.A.
	Goldan 7NTS	93	166	110	200	N.A.	N.A.	N.A.	N.A.

SUPPLEMENTS PER ROOM	PERIODS A & B	PERIODS C & D
SUPERIOR	35	50
EXECUTIVE with use of Carmel VIP Lounge	65	95
FAMILY ROOM	85	115
3rd Bed	86	128
CHILD(18) Sharing with Adult	20	

* The 5 nt & Goldan 7 nt rates are not valid 19 June -4 July '09, 10-24 July, '09 and Dec. 20, '09 - Jan. 2, '10. Only the 1 nt rate is valid for these periods.

- Family Room Double rates include up to 2 Adults + 2 Children.
- Executive Room & Suites with use of Carmel V.I.P Lounge.
- "Goldan 7" - rates will apply when staying 7 nights in this hotel or any combination of this hotel with any other Dan Hotel for a minimum of 7 nights.

SUITES	Rate (2 pax) incl. Israeli Breakfast	Supplement
		Periods C&D
Suite	500	150

- Supplement for 3rd person including Israeli Breakfast & Service Charge, US\$ 86. (Except Periods C,D US\$ 128).

Dan Panorama Jerusalem Special Amenities & Services

- Wireless internet access - high speed (WI-FI) in rooms and public areas (at a fee)
- Business Lounge
- Fitness Center & Massage
- Children Activities (Shabat & Holidays)
- Synagogue (Shabat & Holidays)

